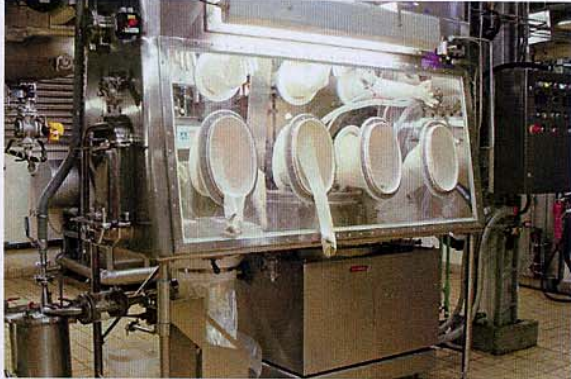




**ROUSSELET
ROBATEL**

BARRIER ISOLATED CENTRIFUGATION FROM ROUSSELET-ROBATEL



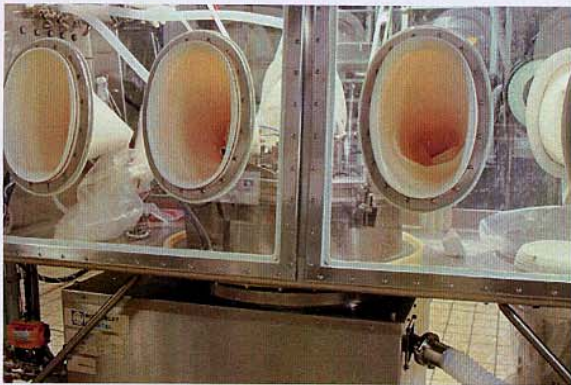
Fully contained centrifugation of cytotoxic and other highly potent compounds

Fully contained centrifugation of cytotoxic and other highly potent compounds is now possible. Designed for the separation of solids and liquids, the addition of a barrier-isolated Rousselet-Robatel centrifuge to your plant will facilitate hazardous material processing while maintaining complete protection of the operator and facility environment.

This type of installation permits the entire separation process from feeding to washing, and product discharge to be performed within the sealed boundaries of the isolation chamber.

Rousselet-Robatel offers three centrifuge sizes for this installation: the Model RC 20 VXR, the Model RC 30 VXR and the Model RC 40 VXR. These machines are vertical axis basket centrifuges that are fully integrated into the isolation chamber.

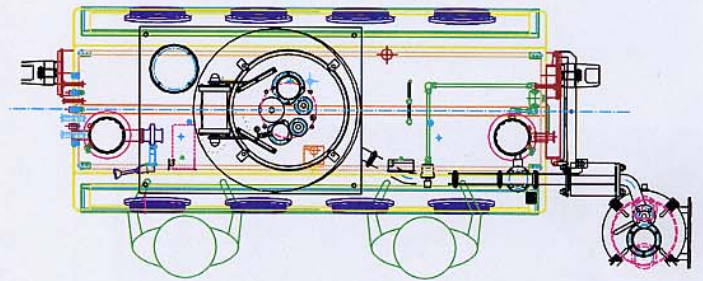
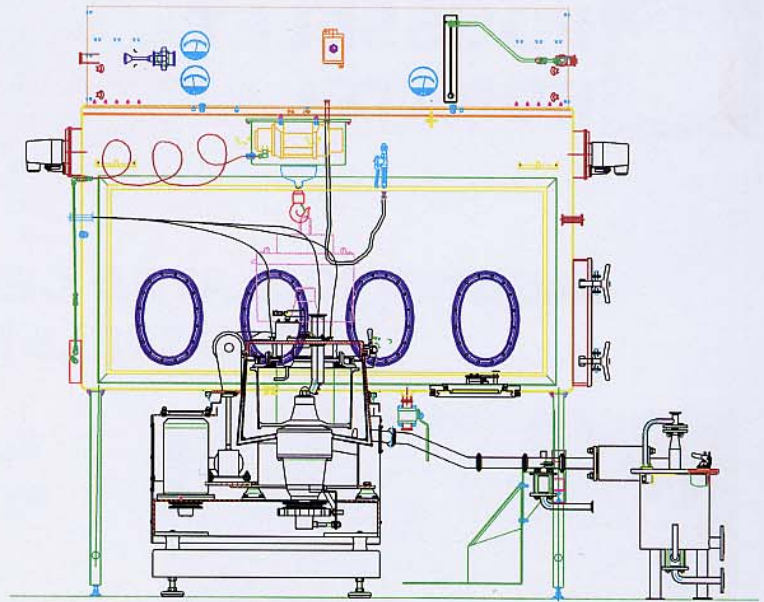
With the barrier isolated centrifuge, product recovery is accomplished using rapid transfer ports. This system permits the exchange of materials without breaking containment. To further protect the operator and ensure product integrity, these rapid transfer ports are interlocked, which prohibits opening of the alpha door without having the corresponding beta flange in place.



In addition to safely handling high potency drugs and obtaining lower residual moisture levels, reduced overall processing times are realized when using a barrier-isolated centrifuge, specifically when compared to more traditional vacuum or pressure filter isolation systems.

General Characteristics of the RC Models

- Clean In Place System
- Jet-Wash Wand
- Oxygen Monitoring System
- HEPA Air Filter
- Alpha-Beta Transfer System
- Meets OEL Category IV Criteria
- Decontamination via Vaporized Hydrogen Peroxide System
- Integrated Liquor Receiving Tank
- Integrated Pan Dryer
- Three Centrifuge Models Available



Centrifuge Specifications

Centrifuge Model	Basket Diameter (mm)	Basket Height (mm)	Useful Volume (l)	Maximum Load (kg)	Maximum Speed (rpm)	Centrifugal Force (G)
RC 20	200	100	2	2.5	3000	1000
RC 30	300	150	5	6	3000	1500
RC 40	400	250	20	25	3000	2010



ROUSSELET
ROBATEL

Headquarters
Avenue Rhin et Danube
Zone Industrielle Marenton
07104 Annonay - France

33 (0) 4 75 69 22 11
33 (0) 4 75 67 69 80

rousselet.sa@rousselet.fr

Genas Facility:
Rue de Genève
69740 Genas - France

33 (0) 4 72 79 18 88
33 (0) 4 72 79 18 80

rousselet.sa@rousselet.fr

Great Britain:
Parkside House
Harrogate
North Yorkshire HG1 5LF

44 (0) 1 423 530 093
44 (0) 1 423 530 120

rousselet.uk@cent.globalnet.co.uk

Germany:
Hauptstraße 20
D- 71093
Weil-Im-Schönbuch

49 (0) 715 762 881
49 (0) 715 763 232

rousselet@-online.de

USA:
703 West Housatonic St.
Ste L15
Pittsfield, MA 01201

1 413.499.4818
1 413.499.5648

sales@robatel.com



Web: www.rousselet.com www.robatel.com