

## FAST CENTRIFUGAL PARTITION CHROMATOGRAPH FCPC® A

Analytical, semi preparative and preparative chromatograph for fractionation and purification of compounds from:

- Natural Products,      ○ Synthetic Compounds
- Biotechnology        ○ Biological Matrices

### CPC Features :

- Complete sample recovery
- No solid-phase chromatographic material required
- Low solvent consumption
- Many aqueous-2-phase systems possible
- High versatility

### Advantages:

- Flexibility
  - 3 versatile standard rotor sizes
  - various cell designs: Z, Twin, extraction
  - easily integrated sets of peripherals
- Industrial design, robust, and reliable
  - all stainless steel, industrial components,
  - heavy duty design, safety interlock,
  - quiet operation
- Easy to use
- Easy access to rotor, easily interchangeable rotors



Kromaton FCPC with open door to show rotor compartment

### FCPC® A TECHNICAL SPECIFICATIONS

| Application           | Analytical   | Semi-preparative | Preparative       | Extraction                     |
|-----------------------|--|------------------|-------------------|--------------------------------|
| Standard rotor volume | 50 ml  | 200 ml           | 1000 ml           | from 300 to 1000 ml            |
| Sample size (**)      | maximum 1 g  | maximum 5 g      | maximum 30 g      | co-current and continuous mode |
| Flow rate (**)        | up to 10 ml/min  | up to 20 ml/min  | up to 40 ml/min   |                                |
| Hydraulic flow rate   | 50 ml/min  | 100 ml/min       | 100 ml/min        |                                |
| Separation Time (**)  | 10 – 45 min  | 10 – 45 min      | 60 – 180 min      |                                |
| Speed / Max. Pressure | 100 to 2000 rpm  |                  | 80 bars/1160 psi. |                                |
| Mode                  | 4-way valve for ascending & descending modes                           |                  |                   |                                |
| Standard              | EC plate and certificate   |                  |                   |                                |
| Material              | Rotor: stainless steel + PTFE. Wetted parts and frame: stainless steel |                  |                   |                                |
| Size / weight / power | 630 x 437 x H630mm / 115 kg / 750W – 110 or 220 VAC                    |                  |                   |                                |
| Noise                 | < 60 dB  |                  |                   |                                |

#### ROUSSELET CENTRIFUGATION SA

Headquarters  
Avenue Rhin et Danube  
PAE de Marenton  
07104 ANNONAY - FRANCE

+ 33 (0) 4 75 69 22 11

+ 33 (0) 4 75 69 69 80

E-mail rousselet.sa@rousselet.com

Web

www.rousselet.com

UK :  
ROUSSELET ROBATEL UK Ltd  
Parkside House, 17 East Parade  
HARROGATE  
NORTH YORKSHIRE HG1 5LF

+ 44(0) 1 423 530 093

+ 44(0) 1 423 530 120

sales@rousselet-robatel.co.uk

Germany :  
ROUSSELET CENTRIFUGATION SA

Bierbacher Str. 30  
D-66424 HOMBURG-WÖRSCHWEILER

+ 49(0) 6848 730580

+ 49(0) 6848 730581

rousselet@t-online.de

www.rousselet-robatel.com

USA :  
ROBATEL Inc.  
703 West Housatonic Street  
PITTSFIELD  
MA 01201

+ 1 413 499 4818

+ 1 413 499 5648

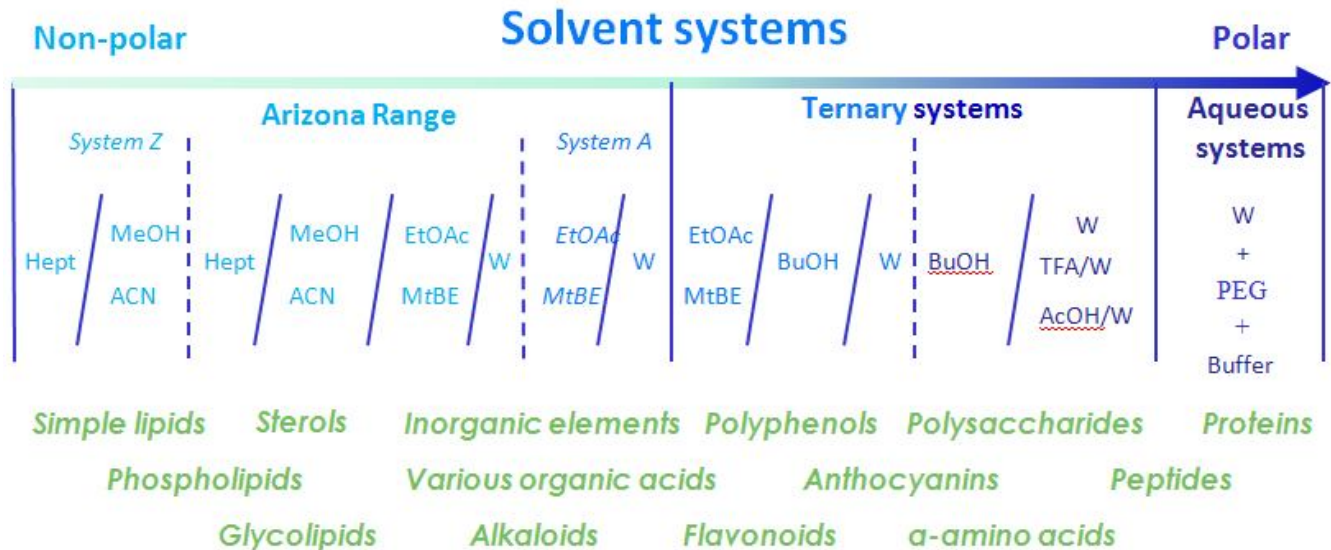
sales@robatel.com

Kromaton offers a complete range of FCPC® stations designed for ease in use. They are adaptable to all lab environments with possibilities to extend the system using different peripherals.



Kromaton FCPC® A 200 Centrifugal chromatograph—with turn-key feeding and sample collection system.

FCPC stations can be run with unlimited combinations of solvent systems to separate either non-polar, polar, or ionic compounds.



**ROUSSELET CENTRIFUGATION SA**

Headquarters  
Avenue Rhin et Danube  
PAE de Marenton  
07104 ANNONAY - FRANCE

+ 33 (0) 4 75 69 22 11

+ 33 (0) 4 75 67 69 80

E-mail rousselet.sa@rousselet.com

Web

www.rousselet.com

UK :  
ROUSSELET ROBATEL UK Ltd  
Parkside House, 17 East Parade  
HARROGATE  
NORTH YORKSHIRE HG1 5LF

+ 44(0) 1 423 530 093

+ 44(0) 1 423 530 120

sales@rousselet-robotel.co.uk

Germany :  
ROUSSELET CENTRIFUGATION SA

Bierbacher Str. 30  
D-66424 HOMBURG-WÖRSCHWEILER

+ 49(0) 6848 730580

+ 49(0) 6848 730581

rousselet@t-online.de

www.rousselet-robotel.com

USA :  
ROBATEL Inc.  
703 West Housatonic Street  
PITTSFIELD  
MA 01201

+ 1 413 499 4818

+ 1 413 499 5648

sales@robotel.com