

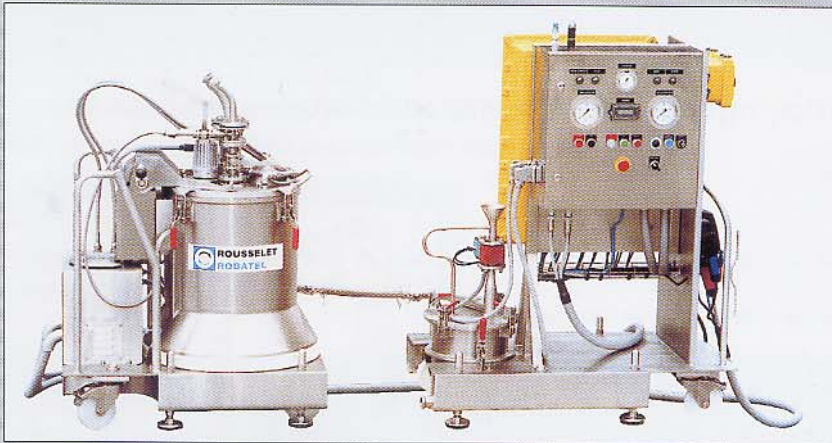


ROUSSELET
ROBATEL

INDUSTRIAL CENTRIFUGES FOR PILOT PLANT DUTY



**For Solid/Liquid separations in the Chemical,
Pharmaceutical, Food, and Biotechnology Industries...**



RC 40 Vx KSA.R



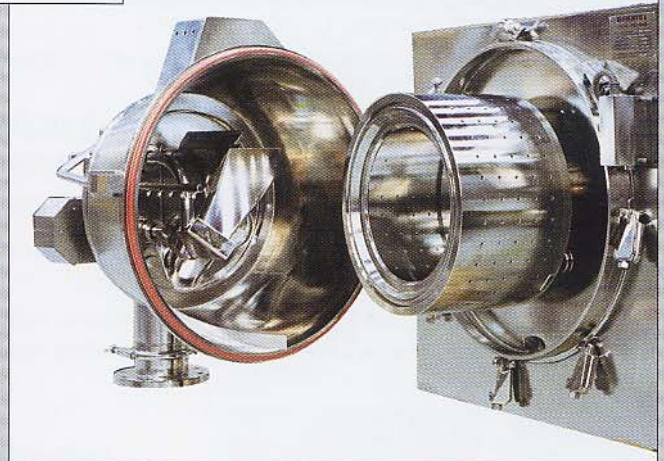
SLAB 540



RC 40 Vx.R



RC 60 Vx KSA.R



EHBL 503

*A wide
range of
centrifuges
for
pilot plant or
small-scale
production.*

- For solid/liquid filtration or solid/liquid decantation.
- Can be used for simple or complex processes.
- Capable of a wide range of duties (explosive environments, hazardous materials, corrosive materials...).
- For all types of products, from bulk chemical to high value added products.
- For single products or multiple products.

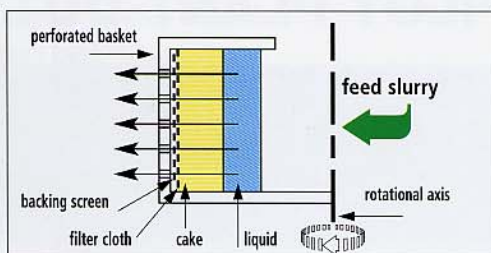
TOP DISCHARGE manual or remo



RC 40 Vx.R

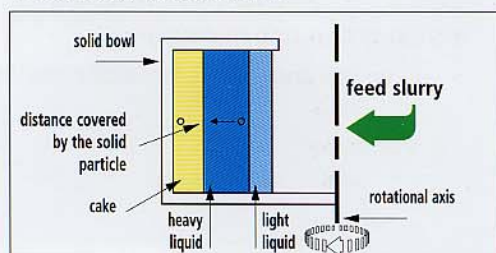
Centrifugal filtration

Centrifugal Solid/Liquid separation using a perforated basket equipped with a filter cloth or removable filter bag.



Centrifugal decantation

Centrifugal Solid/Liquid, Liquid/Liquid, or Solid/Liquid/Liquid separation in a solid bowl. Liquid removal using a skimmer or by overflowing the bowl rim.



Vertical basket centrifuges - Model RC 40 / 50 / 60

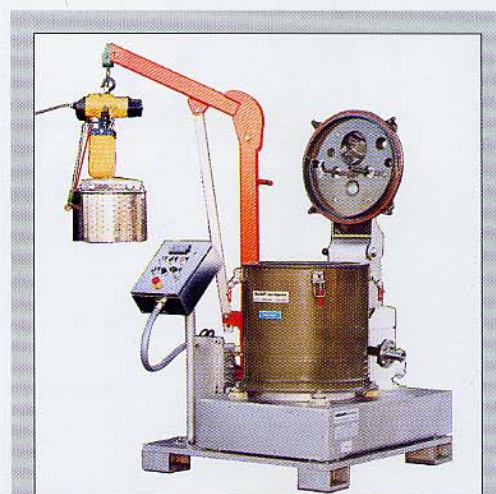
A wide variety of technical characteristics, optional equipment, and features to adapt the centrifuges to your specific needs.

Available with two solids removal methods :

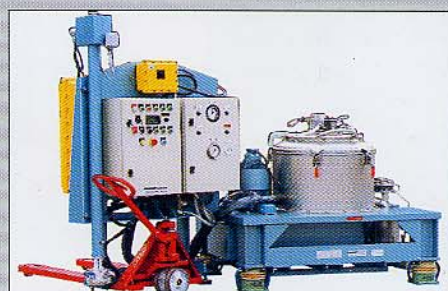
- manual bag / solids removal : Model RC..
 - semi-automatic bag removal : Model RC .. KSA
- Rigid frame mounted on vibration isolators (optional vibration monitoring).
 - Centrifuge and accessories installed on a portable skid or cart, fabricated from painted steel or stainless steel, with locking casters.
 - Belt driven via electric motor (with the possibility of isolating the belts and motor with guards to prevent contamination).
 - Variable speed using an AC variable frequency drive (other drive systems upon request).
 - Stainless steel construction or other materials, alloys, or coatings (Halar, Ebonite...) for selected portions or all parts in contact with products.
 - Various grades of polishing and electropolishing available
 - Seals available in many materials (neoprene, polyethylene, Viton, silicone, Teflon encapsulated...).
 - A wide variety of filter media (cotton, polypropylene, nylon...) which can also be made into filter bags depending on the processing requirements.

TECHNICAL CHARACTERISTICS

Model	Basket					Maximum speed RPM	Centrifugal Force G	Motor Power kW
	ø	Height	Useful Volume	Maximum Load	Filtration Area			
	mm	mm	dm ³	kg	m ²			
RC 40	400	250	20	25	0,31	3000	2010	2,2
RC 50	500	320	34	42,5	0,50	2250	1410	4
RC 60	600	330	55	68,5	0,57	1800	1090	7,5
RC 40 KSA	400	280	18	22,5	0,31	2300	1180	2,2
RC 50 KSA	500	320	35	43	0,50	1700	810	4
RC 60 KSA	600	305	60	75	0,57	1500	750	7,5



RC 50 Vx KSA.R



RC 60 Vx KSA.R



RC 50 KSA

CENTRIFUGES :

Variable filter bag

- Sealed or explosion-proof electrical equipment (per European or American electrical standards).
- Explosion-proof control enclosures for installation in hazardous environments.
- Vaportight construction suitable for inert gas blanketing at 400 mm (16 inches) W.C. nitrogen pressure.
- Feed, wash, and discharge pipes available with a wide range of process connections and adapters.
- Panoramic sightglass with wiper blade. Additional process observation ports with or without observation lamp.
- Optional equipment :
 - Depending on cleaning and accessibility requirements (CIP systems, quick release basket, full-opening casing),
 - Depending on your safety requirements (earth grounding, nitrogen inerting, pressure monitoring, oxygen monitoring system, hydraulic guard).
- With the possibility of furnishing:
 - Cake detector (Models RC 50 and RC 60)
 - Hoisting system for basket centrifuges equipped with :
 - removable filter bag (KSA version)
 - quick release basket.
- Interchangeable decanter kits to transform filtration centrifuge into a batch decanter (available for RC 40 and RC 50).



RC 50 Vx.R

Vertical Decanters - Model SLAB 420 / 540

Two models available. Extremely efficient separation due to the very high centrifugal forces generated, among the highest in the market.

Two methods of liquid removal possible :

- By overflow or
 - Via liquid skimmer(s).
- Bowl can be fabricated with or without baffles.
 - GMP design : full-opening casing, easily cleanable bowl with flat bottom.
 - Skid-mounted for easy portability.
 - Many options available, similar to those mentioned for the RC Models.
 - Filtration kits available (perforated basket and wash tube).



SLAB 420

SLAB 540

SLAB 420

TECHNICAL CHARACTERISTICS

Model	Bowl				Maximum speed RPM	Centrifugal Force G	Motor Power kW
	∅	Height	Useful Volume dm ³	Maximum Load kg			
	mm	mm	dm ³	kg			
SLAB 420	420	200	18	22	4300	4340	5,5
SLAB 540	540	335	40	50	2600	2040	5,5

OTHER BASKET CENTRIFUGES for pilot plant and small-scale production

Automatic models : solids discharge via scraper

Available in two versions :

- Horizontal axis with solids discharge through a chute,
 - Vertical axis with discharge through basket bottom.
- Mounted on an integral inertia plate with vibration isolators.
 - Hydraulic actuation of the scraper
 - Numerous options and features (construction materials, polishing grades, CIP, automatic control systems).
 - GMP design with clean room installation possible for horizontal axis machines.



TECHNICAL CHARACTERISTICS

Model	Ø mm	Depth / Height mm	Useful Volume dm ³	Maximum Load kg	Maximum Speed RPM	Centrifugal Force G	Motor Power kW
EHL 503	500	250	24	30	2600	1890	7,5
EHL 633	630	315	40	50	2400	2020	11
RC 63 Vx DEC	630	370	50	62	1500	790	7,5

Simplified models : directly coupled motor

These centrifuges can not be made explosion-proof nor are they capable of being inert gas blanketed. Their usage is limited to aqueous processing.

- Direct motor coupling and electric braking.
- Triple suspension.
- Options available : materials of construction, variable speed, feed tubes, wash tubes...

TECHNICAL CHARACTERISTICS

Model	Basket					Maximum Speed RPM	Centrifugal Force G	Motor Power kW
	Ø mm	Height mm	Useful Volume dm ³	Maximum Load kg	Filtration Area m ²			
SA 40	400	250	15	7	0,31	1500	503	1,5
SA 50	500	280	30	15	0,44	1500	628	2,2



Siège

Avenue Rhin et Danube
Zone Industrielle Marenton
07104 ANNONAY - FRANCE

Site de Genas

Rue de Genève
69740 GENAS - FRANCE

Grande Bretagne

Parkside House, 17 East Parade
HARROGATE
NORTH YORKSHIRE HG1 5LF

Allemagne

Hauptstraße 20
D-71093 - WEIL-IM-SCHONBUCH

Etats-Unis

703 West Housatonic Street
Suite L 15 - PITTSFIELD
MA 01201



33 (0) 4 75 69 22 11

33 (0) 4 72 79 18 88

44 (0) 1 423 530 093

49 (0) 715 762 881

1 413 499 4818



33 (0) 4 75 67 69 80

33 (0) 4 72 79 18 80

44 (0) 1 423 530 120

49 (0) 715 763 232

1 413 499 5648



rousselet.sa@rousselet.fr

info@robatel.fr

rousselet.uk@cent.globalnet.co.uk

sales@robatel.com