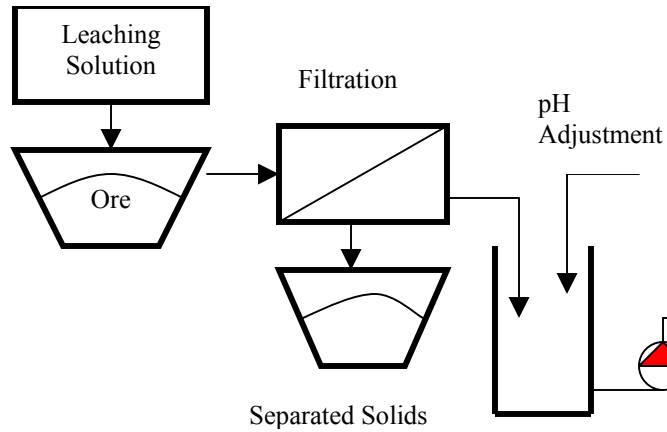
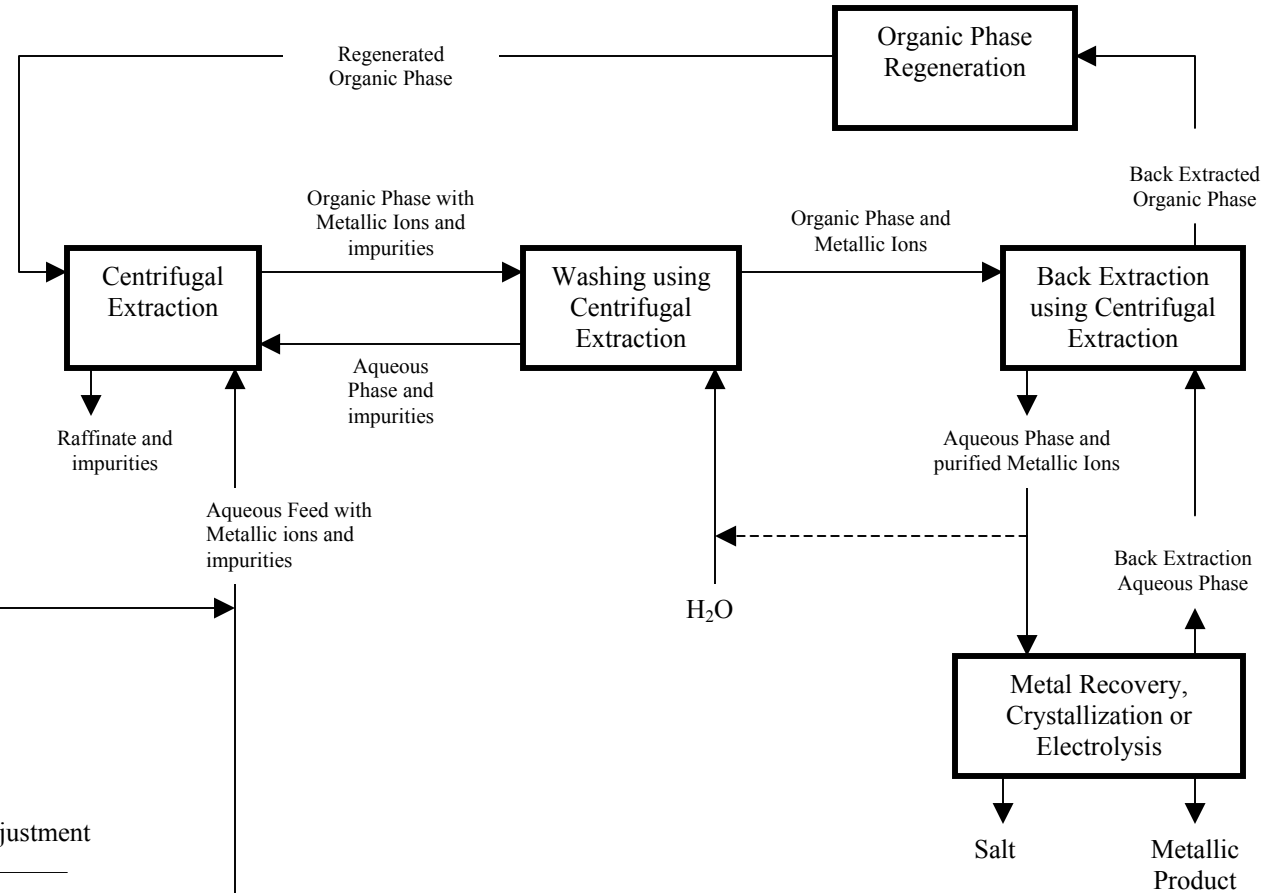
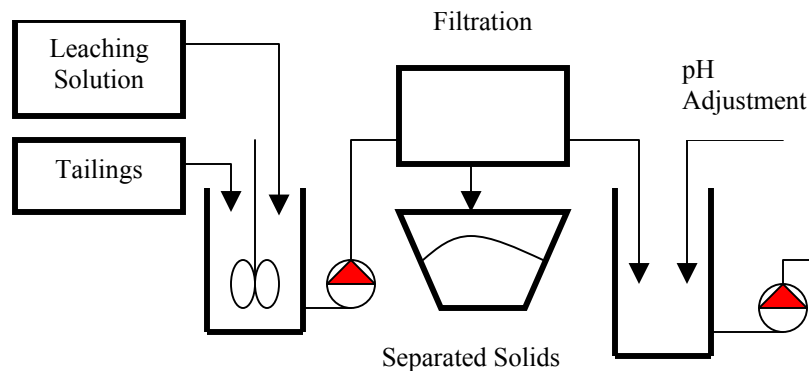


**LIQUID-LIQUID EXTRACTION  
HYDROMETALLURGY PRODUCT SCHEMATIC**

**1 Primary Refining: ORE LEACHING**



**2 Secondary Refining: DISSOLUTION OF METALS**



- According to the observed operating conditions, up to 99.95% of metallic ions are extracted (initial concentration of 10g/L)
- Total flowrate of the two phases that can be treated: 2 liters/hour to 80M<sup>3</sup>/hour