

FCPC, the unique liquid/liquid chromatography technique for the purification of API, biomolecules and natural products

FCPC D – EQUIPMENT FOR INDUSTRIAL PRODUCTION

All the experience and know how in manufacturing industrial centrifuges have been applied to the development of this new FCPC D equipment. Optimized cell design combined to a high G effect up to 650g lead to a cutting edge GMP equipment capable to produce kilograms per day.

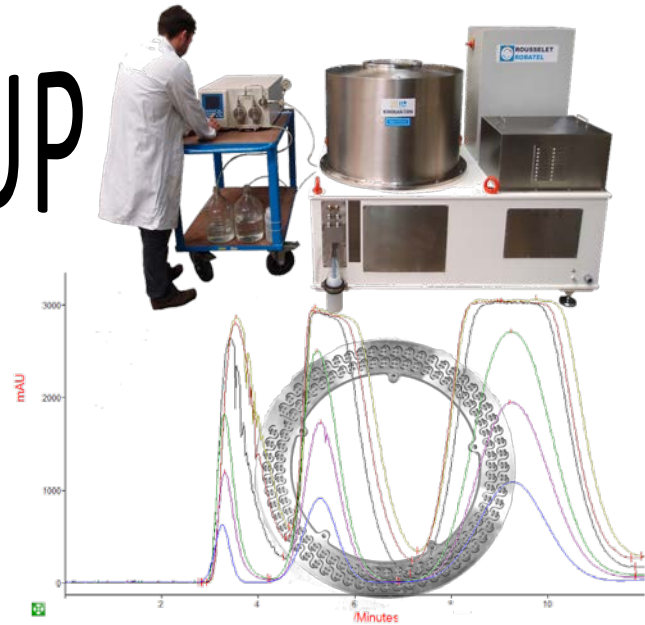
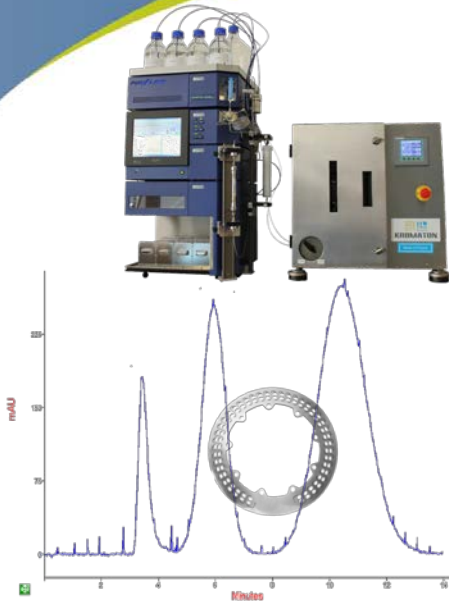
Combined to complete chromatography skid, the FCPC D can work continuously. ATEX construction is available as option.



Member of :



SCALE UP



DATA

FCPC D5000

FCPC D10000

ACTIVE VOLUME (cells)	5 litres	10 litres
TOTAL VOLUME (cells + ducts)	7,5 liters	13,5 liters
SAMPLE MASS (per injection)	50-500 grams	100 - 1000 grams
MAX FLOW RATE	700 ml/min	1500 ml/min
SEPARATION TIME	1 to 2 hours	
MAX PRESSURE	60 bars / 870 psi	
MAX ROTATION SPEED	1400 rpm	
DIMENSIONS	1710mm x 1160mm x 1480mm (height)	
WEIGHT	1400 kgs	1600 kgs
POWER	5,5 kW – 400 V	
MATERIAL IN CONTACT	Stainless steel 316 L / PEEK / PTFE	
HOUSING MATERIAL	Stainless steel 316 L	
OPTIONS	FCPE version with reduced cell number	
	ATEX	

Member of :

